



LUMSDEN
Beach Camp

**Facility Rentals
Policies and Information
Updated 2024**

Lumsden Beach Camp Inc.
Box 33172
Regina, SK, S4T 7X2

306 551-2482

rentals@lumsdenbeachcamp.com

www.lumsdenbeachcamp.com

Table of Contents

Welcome and Mission.....	3
Program and Equipment Available.....	4
Facilities & Site Map.....	5
Bookings & fees.....	6
Rental Policies & Rules.....	7
Camp Clean-up.....	10
Emergency Procedures.....	11

Accreditation

Lumsden Beach Camp is proud to be an accredited member of the Saskatchewan Camps Association (SCA). Our membership to this organization demonstrates our commitment to excellence in camping. The Saskatchewan Camps Association sets very high standards for all aspects of camping including: site & building safety, hiring policies, health and safety practices, environmental practices and requirements of a well-rounded program orientated for campers.

Lumsden Beach Camp is also accredited with The United Church of Canada in accordance with National Camping Standards as established for all United Church camps in Canada.



Welcome to Lumsden Beach Camp

A short drive from Regina, located in the beautiful Qu'Appelle Valley, hugging the southwest shore of Last Mountain Lake, is a piece of paradise known as Lumsden Beach Camp. LBC is the oldest camp in Western Canada, and was founded in 1905.

Whether you are looking for a place to have a day camp experience or a facility & site to run an outdoor school program, run a Scout or Guide camp, or a retreat, Lumsden Beach Camp can meet your needs. Lumsden Beach Camp offers programs for any age group through our day camps and overnight rentals.

Our camp facilities and site are available for rent in late May, June and portions of August and September. This booklet is designed to assist you in designing a facility rental option that will meet the goals and budget of your group.

Mission Statement

Lumsden Beach Camp is a safe, inclusive and sustainable camping community that fosters relationships, leadership, faith in God, environmental stewardship and a connection to nature.

2024 Note About Facilities

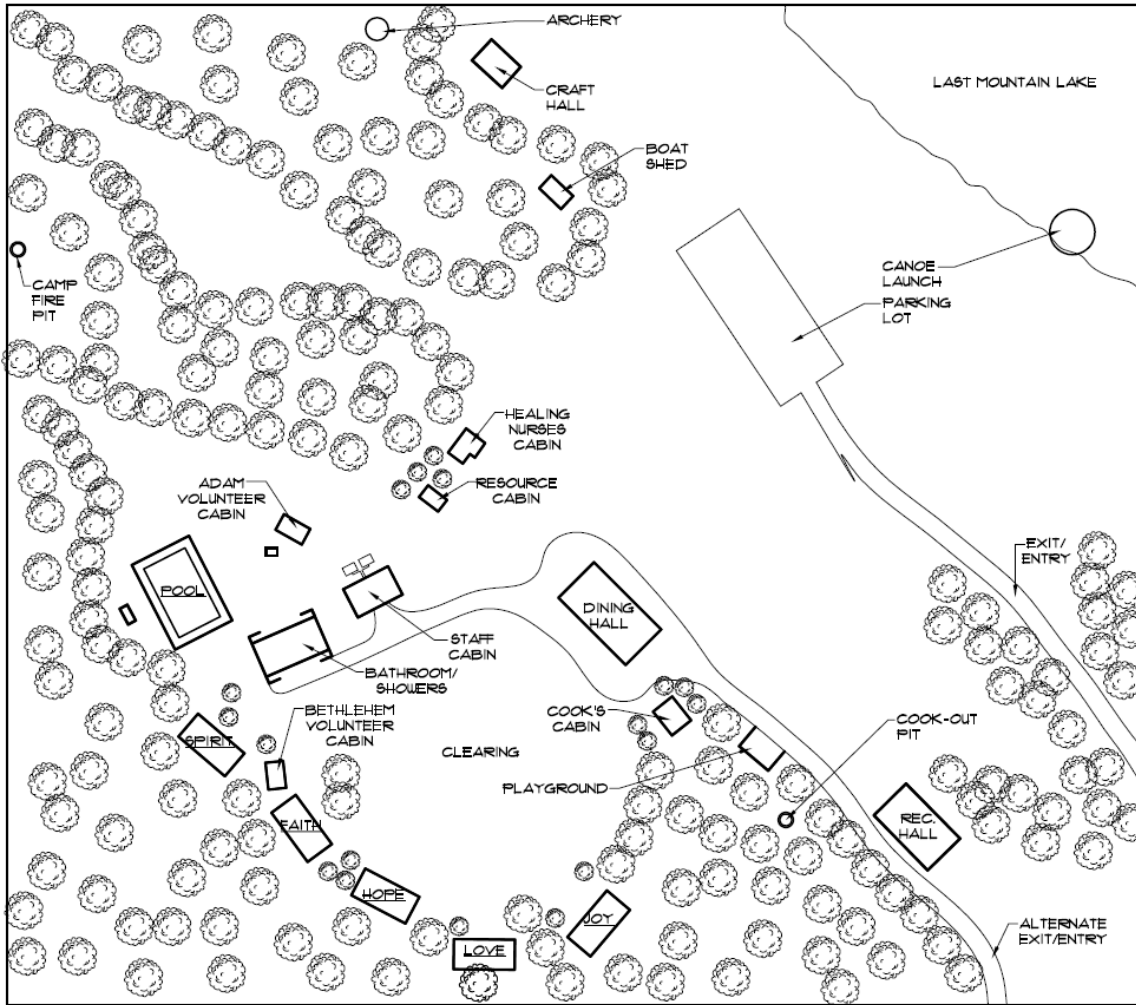
As of September 2023, we are currently in the middle of construction of a new, larger Dining Hall. This may complicate Spring rentals. Please call ahead with any questions that you may have and we will be happy to talk through some options.

Program Opportunities & Equipment Available for Rental Groups

- Canoeing
- Playground
- Large recreation field for soccer, wide games, etc.
- Access to, and use of, the beach area in the Village of Lumsden Beach
- Two large fire pits - cook out areas with benches
- Active beaver pond for pond studies
- Hiking Trails
- Swimming pool (seasonal)
- Archery (qualified supervision required)



Lumsden Beach Camp Site Map



Notes:

This site map gives an idea of the available facilities and is not to scale. There is a significant slope with walking paths between the parking lot and the dining hall.

Building	Capacity	Notes
Dining Hall & Kitchen	70 adults (100 smaller people)	Tables and bench style seating. Kitchen includes grill and walk-in cooler
Cabins	6 cabins sleep 106 total	5 larger main cabins, and 1 small cabin
Rec Hall	100 theatre style	Large open building
ARC (Art Hall)	25 people	Permanent tables and seats.
Pool	49 swimmers	Pool area includes shaded grassy area
Bathrooms	Includes showers, sinks and toilets	There are 2 gender neutral washrooms as well.

Facility Photos



New, modern washroom and shower facilities



Over 200 acres of land to hike and explore



Dining Hall seats approximately 75 – Currently under construction



Cabins are equipped with bunkbeds



Large fire pit with benches

Booking Fees

As early as possible, **contact LBC** to check availability (see cover page for contact information) and **receive the booking form**.

Read this rental guide booklet carefully to ensure that you & all rental participants (youth and adults) are aware of the camp's rental rules, policies and responsibilities.

Rental Fees

Weekdays (Monday to Friday afternoon) - **\$18/person/day**

Weekends (Friday evening, Saturday & Sunday) - **\$20/person/day**

Daily minimums are- \$550 for 1 day, \$650 for 1.5 days, \$750 for two days, etc.

Half day rates are available for arrivals after 4:00 pm or departures prior to 11am. Rental groups have full access to camper cabins, dining & kitchen facilities, washrooms, art hall & recreation hall.

Equipment, Pool & Staff Rental

Rental groups are responsible for lost or damaged equipment (based on the post rental inspection).

Canoes (PFDs and paddles included)	\$100/ rental
Archery	\$75/rental
Pool Use, lifeguard etc.	\$200/ 3 hours
Program, leadership or other staff (if available)	\$70/half day \$110/full day

Notes:

Pool usage requires National Lifesaving Service supervision & LBC Pool Operator. Hiring LBC's certified staff is required. Please check with the rentals person regarding pool availability.

Participants using the canoes must wear PFDs.

Rental Policies & Rules

Damage-Cancellation Deposit

- Applications for all rentals during low season **must include a damage and cancellation deposit equal to the minimum charge**. Your deposit provides final confirmation of your group's rental & ensures your spot will be retained. See cancellation section below.
- An LBC representative will do a walkthrough before and after your rental to review the condition and cleanliness of the facilities.
- Assessments for cleanup or damages will be reviewed. The deposit will then be applied to the outstanding balance at the time of billing.
- A \$50.00 per hour/person cleaning or repair fee will be assessed for any clean-up left unfinished or necessary repairs to damaged property.

Cancellation

- Cancellations 60 days or more prior to start date will receive 50% of deposit back. Cancellations less than 60 days before will lose 100% of deposit.
- Cancellation of a rental due to inclement weather is at the discretion of the Camp Director &/or the Camp Board. If LBC cancels your rental, a full refund will be provided.
- LBC also retains the right to cancel a rental if we do not feel that we can adequately accommodate your group (this may be due to environmental factors, construction on site, etc.) If LBC cancels your rental, a full refund will be provided.

Insurance Coverage

- A copy of your "Certificate of Insurance" proving you have adequate legal liability and comprehensive general liability coverage must accompany your rental application or be forwarded within two weeks. Renters must carry at least \$2,000,000 in liability insurance. Please ask your organizational or home insurer for this document.

Payment

- A final invoice will be issued shortly after your rental. Payment is due within 30 days.
- Final payment will be based on 80% of the estimate or actual attendance, whichever is greater.

Damages

- Rental groups are responsible for any damages incurred to the facility, property or equipment as a result of improper use, negligence, carelessness or intentional vandalism. Writing on cabins walls, bunks and mattresses is prohibited. A \$50/hour fee will be assessed for any repairs to damaged property (plus costs to replace damaged materials). If you notice anything on site that requires attention or may be a danger to your group, please inform an LBC representative immediately.

Smoking, Alcohol and Drugs

- Smoking or vaping is permitted only in private vehicles. Evidence of smoking elsewhere will result in clean up fees.
- No illegal drugs are permitted on camp property.
- Alcohol may be allowed, however, a request must be submitted to and approved by the camp board. The privilege of alcohol use is never extended to groups where minors are present without their parent or guardian also on site.

- Groups approved to have alcohol on site must provide a copy of the appropriate license from SLGA at least 5 days prior to the rental.
- Glass bottles are not allowed. Any evidence of glass being used (broken bottles), will result in clean up fees.

Safety

- Please refer to the emergency procedures section in this booklet. It is the responsibility of the rental group to make sure all participants and leaders are familiar with these procedures.
- Beach swimming and canoeing are to take place under skilled adult supervision. Supervision ratio must be 1 adult to 5 participants.
- Groups can ask to hire an LBC life guard for beach swim supervision. We cannot guarantee that someone will be available.

Water / Sanitation

- The camp operates on a private well and self-contained septic system. With this in mind, please conserve water and limit toilet paper and paper towel usage.
- Doors to all buildings must be kept closed. This is to ensure that rodents & other creatures (skunks, porcupines) are kept out.
- Pets are not allowed at LBC unless special permission has been granted in advance.

Site Preservation

- Our goal is to maintain camp property in a natural state for the future enjoyment and education of all campers and renters. Please refrain from harming anything that is alive (flora and fauna). Please use hotdog sticks provided; do not cut your own!
- Please contain your fires to the designated fire areas. No new fire pits are to be dug. Extinguish all fires completely before retiring or when unattended. Any fire damage due to negligence will be charged to the renter. We supply a reasonable amount of firewood to renters. You will be charged for excessive use. Do not cut your own firewood.
- ATV's and snowmobiles are not permitted on camp property.

Parking & Vehicle Use

- With the exception of one vehicle designated for emergency purposes, all vehicles are to be parked along the lower road.
Please do not park along upper road or around camp buildings in the upper area.
- Please limit use of upper road to a minimum (e.g. food drop off purposes, disabled parking). No vehicles are to be driven past the Dining Hall. **Vehicles are not to be driven up to the flat recreation area located just below the cabins. There are tanks beneath the surface and if they are damaged it will be VERY costly to your group.**

Laundry

- On site laundry facilities are not available for rental groups, except for washing kitchen towels.

Firearms

- No firearms or air rifles are allowed on camp property.

Meals and Food

- Facility rental groups must supply all of their own food and prepare all their own meals.
- NO FOOD is allowed in the cabins! We want to keep our cabins clean and rodent free.

Camp Clean-up

- We request your group's co-operation in keeping the camp clean. Overnight rental groups are expected to follow the cleaning procedures outlined in the clean-up checklist.
- A \$55 per hour cleaning charge will be assessed for any clean-up left unfinished.
- The camp will supply all cleaning supplies and paper products (paper towels, toilet tissue, dish soap and garbage bags). If something is missing, please speak to the staff on site.

Medical Care

- Your rental group is responsible for supplying all first aid equipment and to designate a qualified adult to dispense first aid supplies.

Camp Cleanup List

Your group is responsible for keeping the camp clean and tidy during your stay. The following is a list of areas and type of cleaning that will need to be completed. Thank you for respecting our camp property.

AT THE END OF YOUR STAY...

All facilities which have been used by your group will need to have the following (as applicable) completed. Cleaning products and equipment will be supplied.

- Garbage:** Collect all garbage bags and put into the bins located along the road beside the Recreation Hall. Do not leave any garbage or food in buildings. NO LOOSE GARBAGE IN BINS PLEASE
- Bathrooms:** Instructions on how to clean the toilets, floors, showers and sinks are posted in each bathroom. Cleaning supplies are in the girl's washrooms closet (in first shower stall).
- Cabins:** Wipe mattresses with spray bottles located in center room & paper towel. Sweep floors and mop if necessary.
- Kitchen:** Clean stove and grill, freezers and refrigerators as well as any dishes, pots, pans and other kitchen items that you used. Mop floors.
- Grounds:** Do a quick walk through site, especially campfire pits, and pick up any garbage you find.
- Buildings:** If your group used any other builds, please sweep or tidy as needed.



Notes: At the **beginning & end** of your rental, a camp staff member will do a walkthrough (accompanied with a checklist) of the camp with you. Please provide any feedback about your rental experience to rentals@lumsdenbeachcamp.com.

Emergency Procedures

For all emergency situations (medical, police and fire), please dial 9-1-1.

Other important numbers:

- RCMP (Lumsden) 306 731-4270
- Pasqua Hospital (Lewvan Dr and Dewdney Ave) 306 766-2222
- Regina General Hospital (Toronto Street and 15th Avenue) 306 766-4444

Fire Emergency:

- Locate the fire extinguisher in the building and use it to extinguish the fire. It is advisable to locate all fire extinguishers during your initial orientation and/or walkthrough of the camp. Check with the camp rentals personnel or the camp's site staff if you are unsure of their location or operation.
- Please make sure campfires are attended at all times and are completely out when leaving. Water taps are available in the cookout pit and campfire pit to extinguish fires.

Inclement Weather:

- The camper cabins are designated as Emergency Shelters during tornados or other inclement weather.

This guide booklet is subject to revision at the discretion of the Lumsden Beach Camp Board. All rental fees and policies are subject to change. Please ensure that you have a current issue of the rental guide.

(Revised for 2024)